

1112 SOUTH FLAGLER DRIVE

BEING A PORTION OF SECTION 27, TOWNSHIP 43 SOUTH, RANGE 43 EAST,
CITY OF WEST PALM BEACH, PALM BEACH COUNTY, FLORIDA.

129

STATE OF FLORIDA }
COUNTY OF PALM BEACH }

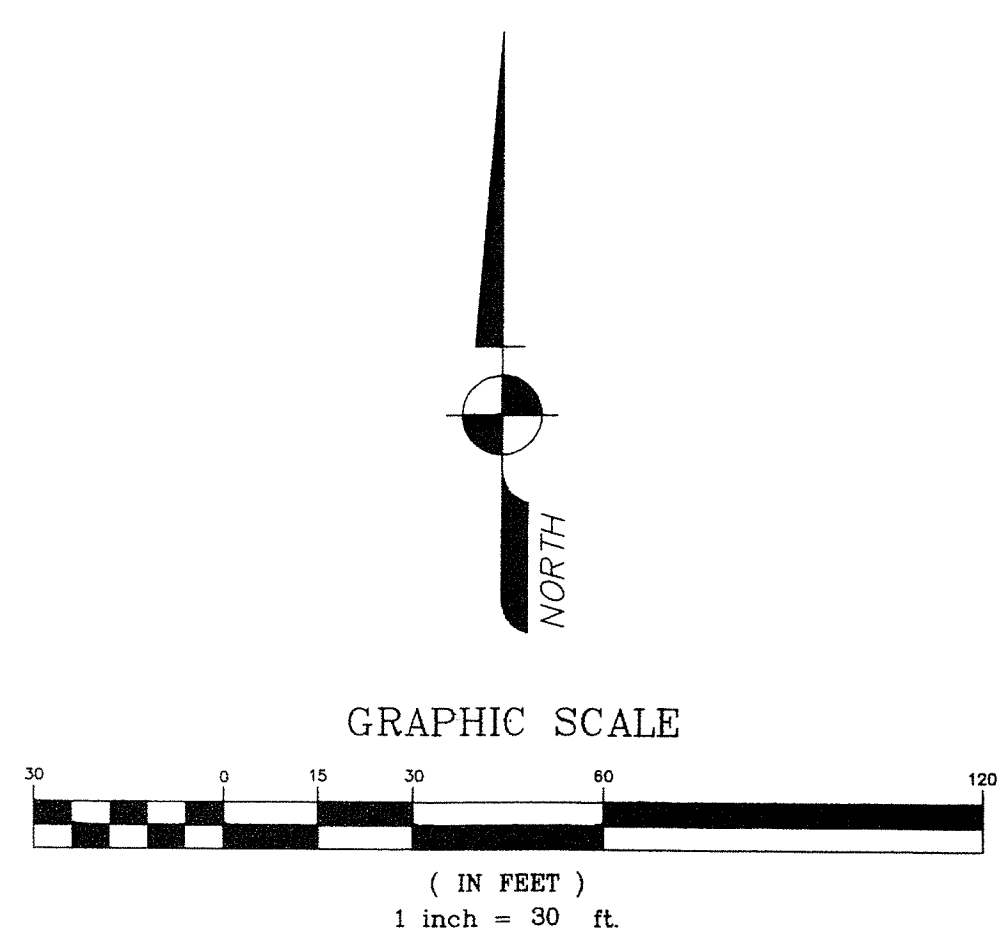
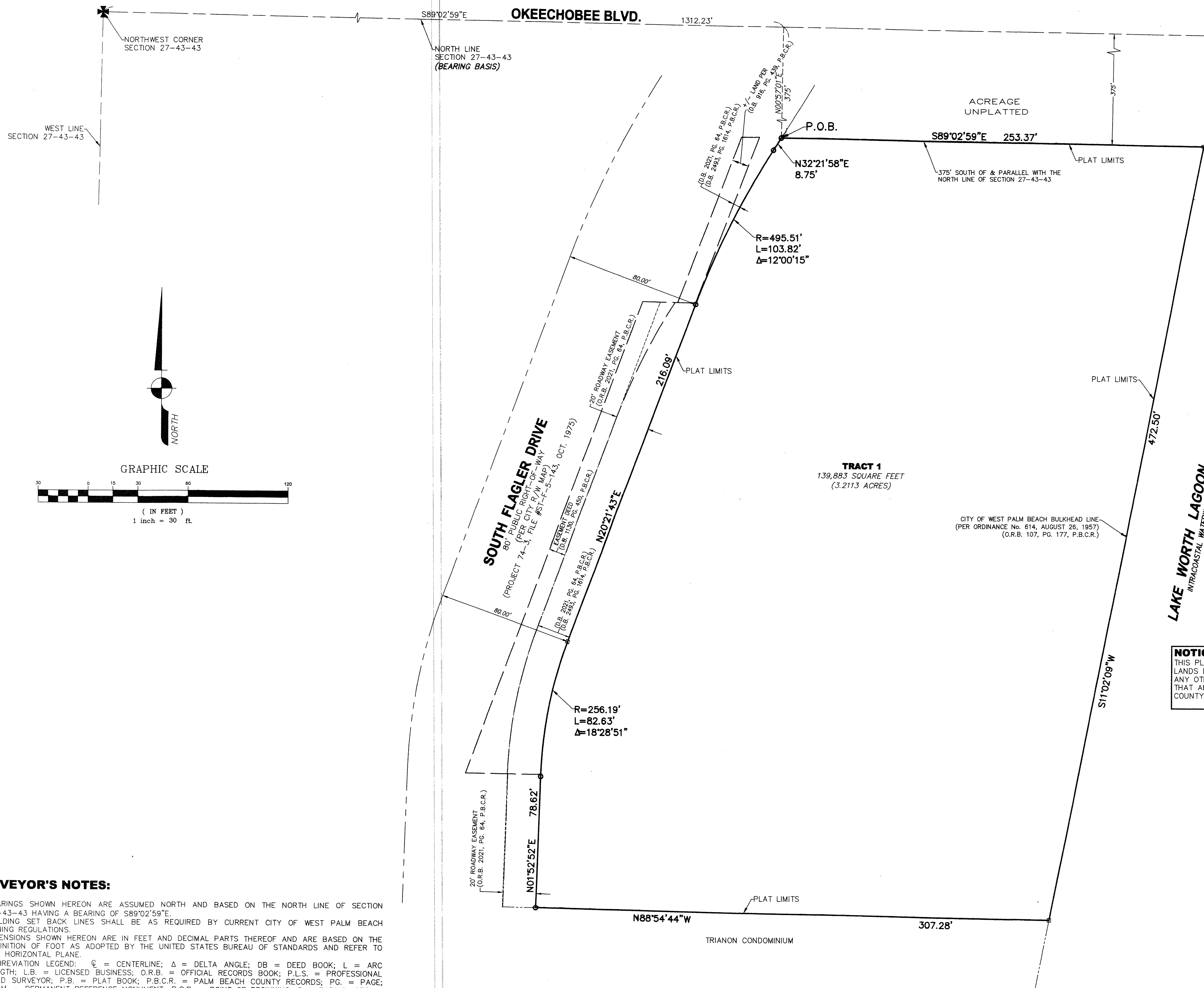
THIS PLAT WAS FILED FOR RECORD AT _____ M.
THIS _____ DAY OF _____
A.D. 2014 AND DULY RECORDED
IN PLAT BOOK _____ ON
PAGES _____ THROUGH _____

SHARON R. BOCK
CLERK AND COMPTROLLER

By: _____
DEPUTY CLERK

SHEET 2 OF 2 SHEETS

THIS INSTRUMENT WAS PREPARED BY:
JOHN T. DOGAN, P.L.S.
AVIROM & ASSOCIATES, INC.
SURVEYING & MAPPING
50 S.W. 2nd AVENUE, SUITE 102
BOCA RATON, FLORIDA 33432
(561) 392-2594



SURVEYOR'S NOTES:

- BEARINGS SHOWN HEREON ARE ASSUMED NORTH AND BASED ON THE NORTH LINE OF SECTION 27-43-43 HAVING A BEARING OF $S89^{\circ}02'59''E$.
- BUILDING SET BACK LINES SHALL BE AS REQUIRED BY CURRENT CITY OF WEST PALM BEACH ZONING REGULATIONS.
- DIMENSIONS SHOWN HEREON ARE IN FEET AND DECIMAL PARTS THEREOF AND ARE BASED ON THE DEFINITION OF FOOT AS ADOPTED BY THE UNITED STATES BUREAU OF STANDARDS AND REFER TO THE HORIZONTAL PLANE.
- ABBREVIATION LEGEND: \odot = CENTERLINE; Δ = DELTA ANGLE; DB = DEED BOOK; L = ARC LENGTH; L.B. = LICENSED BUSINESS; O.R.B. = OFFICIAL RECORDS BOOK; P.L.S. = PROFESSIONAL LAND SURVEYOR; P.B. = PLAT BOOK; P.B.C.R. = PALM BEACH COUNTY RECORDS; PG. = PAGE; P.R.M. = PERMANENT REFERENCE MONUMENT; P.O.B. = POINT OF BEGINNING; R = RADIUS; SEC. = SECTION; SQ. FT. = SQUARE FEET; R/W = RIGHT OF WAY.

NOTICE:
THIS PLAT AS RECORDED IN ITS GRAPHIC FORM, IS THE OFFICIAL DEPICTION OF THE SUBDIVIDED LANDS DESCRIBED HEREIN AND WILL IN NO CIRCUMSTANCES BE SUPPLANTED IN AUTHORITY BY ANY OTHER GRAPHIC OR DIGITAL FORM OF THE PLAT. THERE MAY BE ADDITIONAL RESTRICTIONS THAT ARE NOT RECORDED ON THIS PLAT THAT MAY BE FOUND IN THE PUBLIC RECORDS OF THIS COUNTY.

LEGEND:

- \odot - INDICATES SET PERMANENT REFERENCE MONUMENT, A 5/8"x18" IRON ROD WITH A 2" ALUMINUM CAP, STAMPED "PRM AVIROM LB 3300"
- \square - INDICATES SET PERMANENT REFERENCE MONUMENT, A NAIL & DISC STAMPED "PRM LB #3300"

AVIROM & ASSOCIATES, INC.
SURVEYING & MAPPING
50 S.W. 2ND AVENUE, SUITE 102
BOCA RATON, FLORIDA 33432
TEL. (561) 392-2594, FAX (561) 394-7125
www.AVIROM-SURVEY.com

©2014 AVIROM & ASSOCIATES, INC. all rights reserved.
This sketch is the property of AVIROM & ASSOCIATES, INC. and should not be reproduced or copied without written permission.